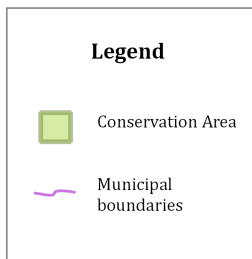
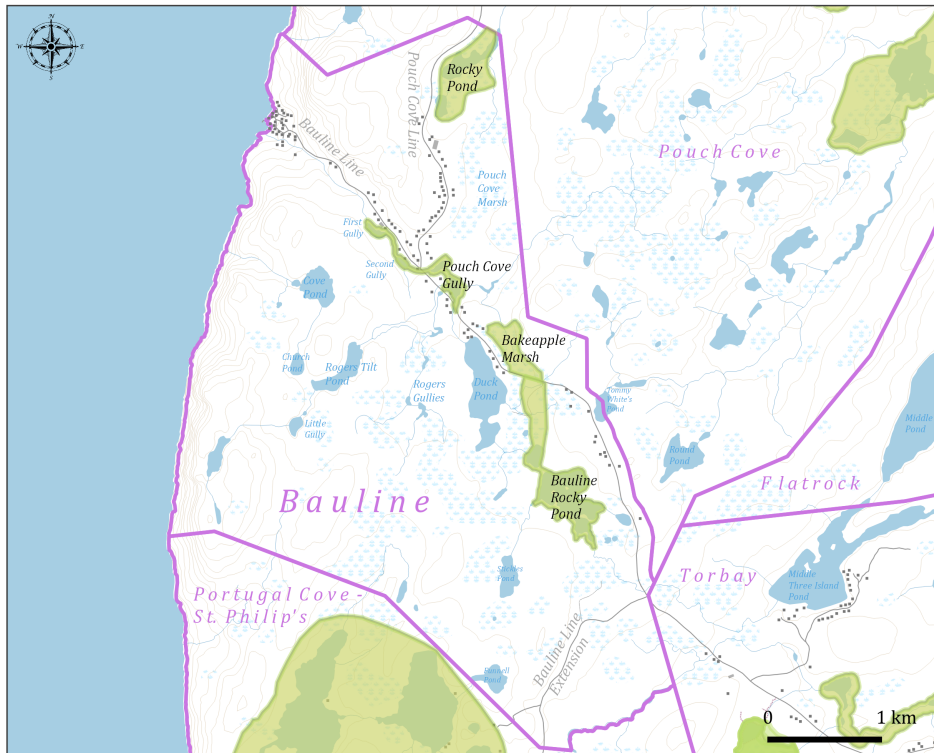


Bauline Municipal Habitat Stewardship Agreement

Conservation Areas for the Habitat Stewardship Agreement

Town of Bauline, Newfoundland & Labrador, Canada



The Town of Bauline and the Government of Newfoundland and Labrador signed a **Municipal Habitat Stewardship Agreement** in 2015, committing to the conservation and enhancement of wildlife habitat within the town's planning boundaries.

The agreement designates the following 4 conservation areas, totalling 185 acres: Rocky Pond, Pouch Cove Gully, Bakeapple Marsh and Bauline Rocky Pond. These areas have excellent wetland and upland habitat for waterfowl, shore birds, and songbirds.

Bauline Rocky Pond



Yellow Warbler

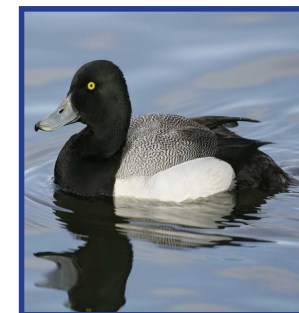
What to look & listen for for!



Spotted Sandpiper



Song Sparrow



Greater Scaup