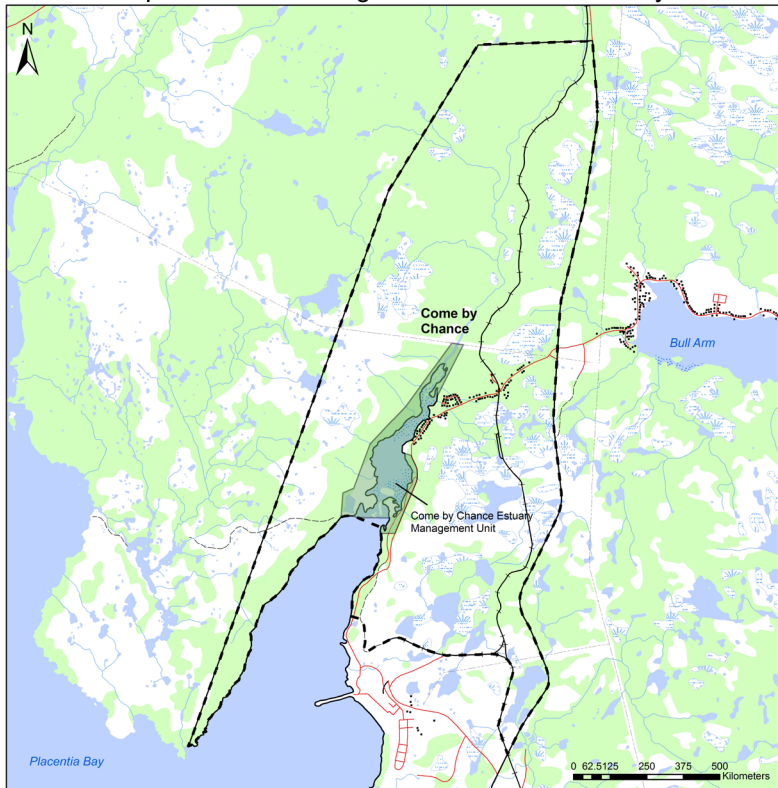


Come By Chance Wetland Habitat Stewardship Agreement

The Town of Come By Chance and the Government of Newfoundland and Labrador signed a **WETLAND HABITAT STEWARDSHIP AGREEMENT** in January 1995, committing to the conservation and enhancement of wildlife habitat within the town's planning boundaries.

Within a larger stewardship zone, the agreement designates the following areas as protected areas, known as Management Units, totalling 469 acres: the estuary to the power line north of the town, the riparian zone surrounding the estuary and the islands, and Gilbert's Pond.

Stewardship Zone and Management Units for Come by Chance



Legend	
	Municipal Boundary
	Stewardship Zone
	Management Unit
	Buildings
	Powerline
	Aband. Railway
	Road
	Trails
	River/Streams
	Bogs
	Waterbodies
	Foreshore Flats
	Vegetation

Projection Information:
 TM NAD 83 CNT
 March 2009

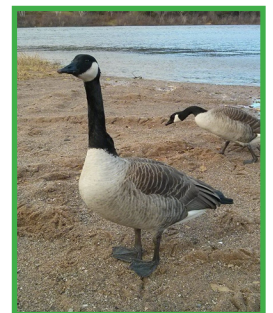
Come By Chance Estuary



What to look for!



American Black Duck



Canada Goose

