

# Hawke's Bay Habitat Conservation Map

## Your town conserves wildlife habitat!

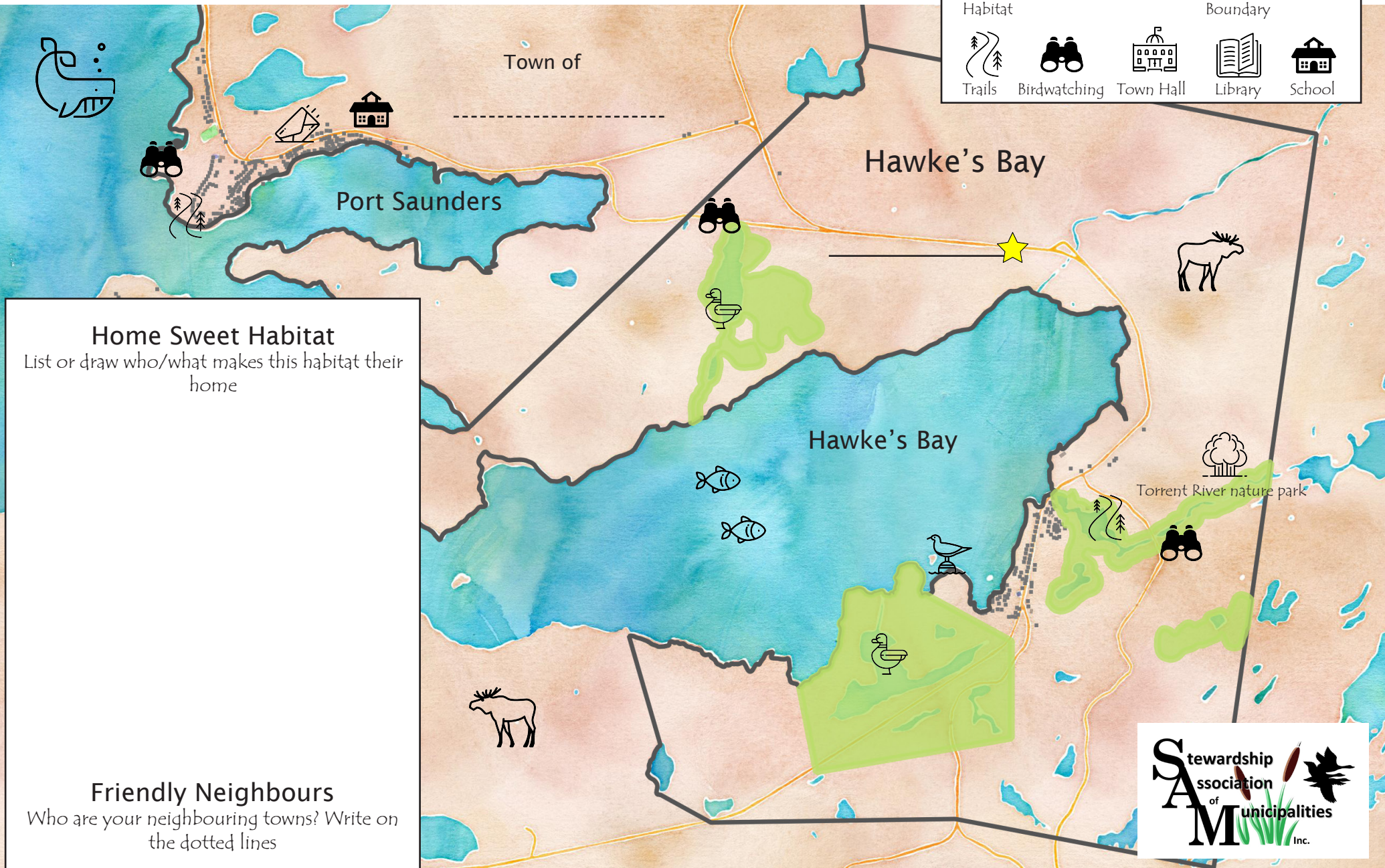
Do you know the roads marked with a star?

Can you circle your school and find your house?

Can you circle the closest protected habitat (green blobs) to your house?

Fill in the road names! ★

### Map Legend



### Home Sweet Habitat

List or draw who/what makes this habitat their home

### Friendly Neighbours

Who are your neighbouring towns? Write on the dotted lines



# The S in SAM is for Stewardship!

Stewardship means to take care of the environment

## Stewardship Checklist:

- Walking a Trail
- Finding a Geocache
- Talking about Wetlands
- Recycling
- Learning a Bird Call
- Birdwatching
- Picking up Litter
- Reading about Wetlands
- Composting
- Keeping Pets on a leash



### Birdwatching List

Circle the birds you have seen in your town



American Black Duck



Green-winged Teal



Common Goldeneye



Lesser Scaup



Dark-eyed Junco



Fox Sparrow



Yellow-rumped Warbler



Black-capped Chickadee



Greater Yellow-legs



American Crow



Great Black-backed Gull



Black-legged Kittiwake

All bird illustrations by David Allen Sibley, from audubonsociety.org; All graphics from freepix.com

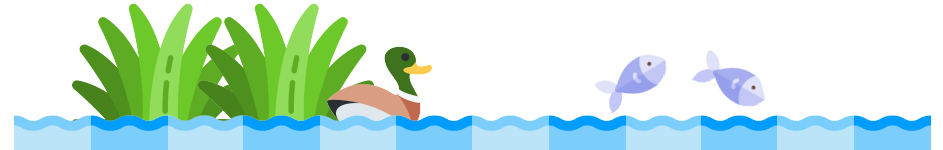
# Habitat Conservation and YOU

## Say Hello to SAM

Stewardship Association of Municipalities works with **your town** to help conserve habitat for animals, birds, fish, plants, and you!

**Habitat:** is the natural home of plants, animals, and other organisms

**Conservation:** is the protection of the natural environment including its plants and animals



I help conserve habitat because...

.....

.....

.....

.....



samnl.org  
samstewardship@gmail.com

