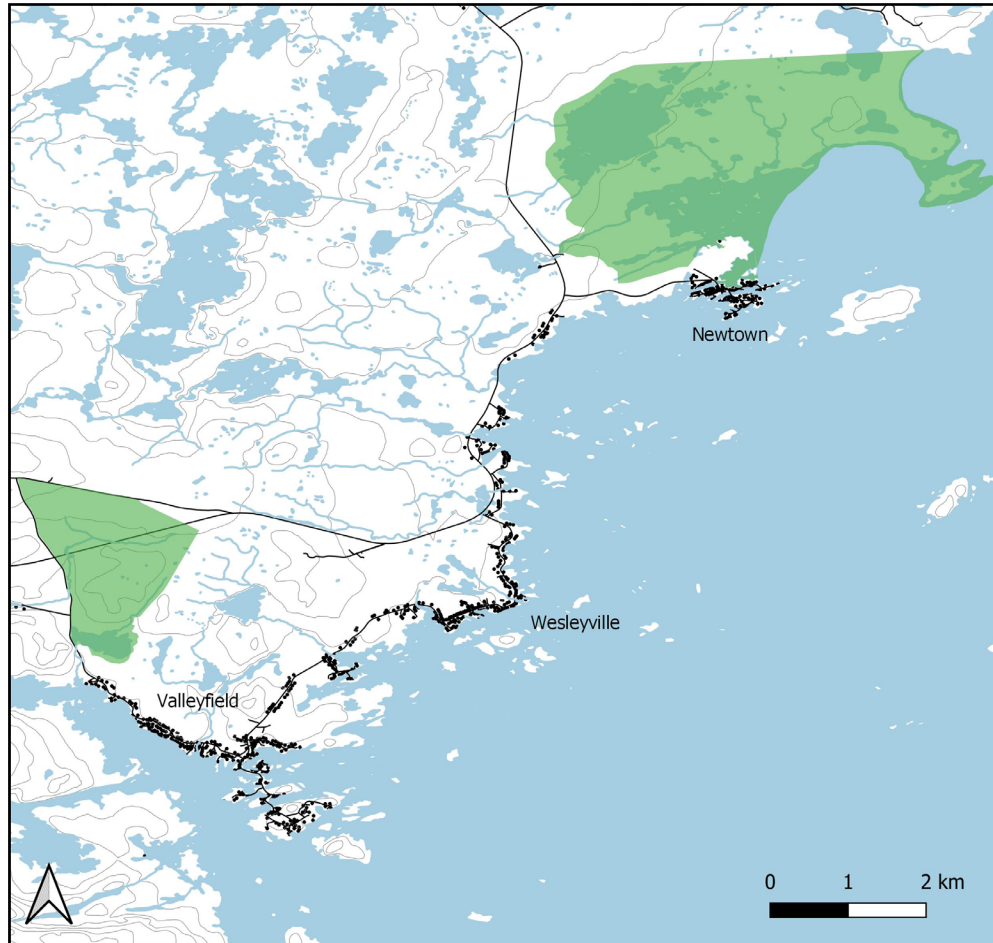


New-Wes-Valley Wetland Habitat Stewardship

Agreement



The Town of New-Wes-Valley and the Government of Newfoundland and Labrador signed a **WETLAND HABITAT STEWARDSHIP AGREEMENT** in January 2017, committing to the conservation and enhancement of wildlife habitat within the town's planning boundaries.

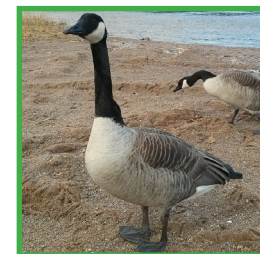
The agreement designates Business Pond, Queen's Meade (Newtown), and Cape Freels as protected areas, known as Management Units, totalling 4,812 acres (1,947 hectares).



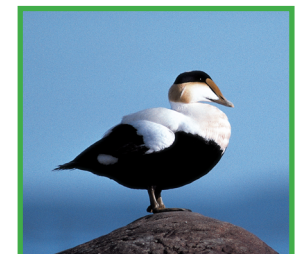
What to look for!



American Black Duck



Canada Goose



Common Eider



January 2023