

Habitat Conservation Plan for the Town of Garnish



October 2017

**Prepared by the Newfoundland and Labrador Department of Fisheries and Land Resources in
partnership with the Stewardship Association of Municipalities and the Town of Garnish**



Town of Garnish

614 Sunset Drive, Garnish
Fortune Bay, Burin Peninsula
Newfoundland and Labrador
Canada, A0E 1T0
709 826 2330
samnl.org/garnish
townclerk@eastlink.ca



NL Eastern Habitat Joint Venture

Department of Fisheries and Land Resources - Wildlife Division
117 Riverside Drive, P.O. Box 2007
Corner Brook, NL, Canada A2H 7S1
709 637 2013
ehjv.ca
@EHJVNews
facebook.com/EasternHabitatJointVenture



Stewardship Association of Municipalities (SAM)

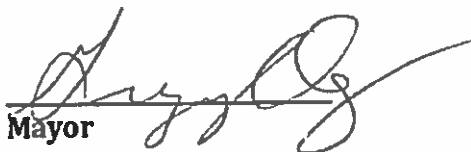
Newfoundland and Labrador, Canada
samnl.org
@SAM_Stewardship
facebook.com/Stewardshipassociationofmunicipalities
samconservation@gmail.com

Preface

In the province of Newfoundland and Labrador some of the wildlife and wildlife habitats that are in greatest danger of being negatively impacted are those influenced by residential, commercial and industrial activities within the vicinity of municipalities. In this province, the primary focus of the Eastern Habitat Joint Venture (EHJV) is to conserve valuable wildlife habitat through Stewardship Agreements. The Town of Garnish was identified as having just such ecologically valuable, and unique, habitat located within its Municipal Planning Area.

The Town of Garnish signed a stewardship agreement with the provincial government in October 2013 where both parties pledged their commitment to conservation and protection of habitat within designated land areas known as Management Units as well as promoting wise use of other wildlife habitat within the vicinity of the Town. In accordance with this agreement, Garnish manages these areas with technical advice provided by the provincial Wildlife Division, in part via this Habitat Conservation Plan. With the signing of this plan, the agreement parties officially accept this Habitat Conservation Plan and agree to use it as a guide to govern activities within the designated Management Unit.

The following signatories agree to work towards the implementation of the following *Habitat Conservation Plan* for the Town of Garnish:


Mayor

April 21/18
Date


Witness

April 2/18
Date


Department of Fisheries and Land Resources
Government of Newfoundland and Labrador

Dec 12/18
Date

Contents

Section 1: Plan Overview.....	5
Section 2: Habitat Conservation in Newfoundland and Labrador	6
Section 3: Wildlife and Wildlife Habitat in Garnish	10
Section 4: Policies for Habitat Conservation	14
Section 5: Habitat Conservation and Education Strategies	17
Appendix 1: Garnish Municipal Stewardship Agreement	33
Appendix 2: Birds in the Town of Garnish	38
Appendix 3: Conservation enforcement form	40
Appendix 4: Bird & Bat Houses	41
Appendix 5: Plants for ecological restoration.....	44

List of Figures

Figure 1. Map of Habitat Stewardship Agreements signed in Newfoundland and Labrador.	7
Figure 2. Map of the two Garnish Management Units.....	10
Figure 3. Garnish Barasway Management Unit.....	11
Figure 4. Big Hill Pond Management Unit	11
Figure 5. Example of the SAM interpretive sign.....	19
Figure 6. Cavity Nest Box, Cobb's Pond, Gander	22
Figure 7. Bat Roosting Box in Salmonier Nature Park.....	23
Figure 8. Bat Box in Pynn's Brook, Western Newfoundland	24
Figure 9. A wooden bird viewing tower.....	27
Figure 10. Enclosed bird blind with mural in Winterland NL.	28
Figure 11. Viewing deck in Winterland, NL.....	28

Section 1: Plan Overview

Stewardship Agreement Goals

- (1) To conserve habitat located within the designated Management Units and to positively influence habitat uses.
- (2) To maintain and/or increase wildlife use of those areas, particularly by waterfowl, shorebirds and other bird species.
- (3) To increase public awareness of the importance of wetland habitats for conserving waterfowl, shorebirds and other wildlife.

Plan Purpose

The Town of Garnish will use this Habitat Conservation Plan as a guide to govern activities which impact wildlife habitat, wetlands, and waterfowl/shorebirds to minimize negative impacts within the areas designated for conservation.

Importantly, the Town of Garnish manages the eastern portion of the Frenchman's Cove Barasway, through the Frenchman's Cove Barasway Management Unit, but the Town of Frenchman's Cove, through their own Management Unit, manages the central and western portion. The location of this natural feature within two different towns means that the two towns should collaborate closely on any activities involving this shared area. Projects, activities, ideas, and initiatives involving this area should be communicated between the two towns, their Councils, and any involved committees or groups.

Plan Objectives

- (1) To present a general assessment of the wetland habitats and wildlife species designated for conservation.
- (2) To recommend protection, conservation, and enhancement strategies.
- (3) To describe potential initiatives for education and awareness among the public to increase support and cooperation of the Town's citizens.

Section 2: Habitat Conservation in Newfoundland and Labrador

Introduction

Human development has resulted in the destruction or alteration of many types of habitat all over the world. The number and diversity of North America's wildlife species has been declining over the latter half of the twentieth century. Some of this decline is due to the loss of natural habitats to urban, industrial and agricultural expansion. Wetlands are among the areas most affected by this development and are one of the most sensitive ecosystems on the planet. Wetlands are unique ecosystems that often occur at the edge of aquatic (water, fresh or salty) or terrestrial (upland) systems. Healthy wetlands are some of the most biologically diverse and productive ecosystems on earth and play a major role in ecosystem health.

Wetlands serve as important buffers to flooding, function as sinks for carbon and as natural reservoirs for holding, purifying, and recharging water. From an economic stance, wetlands are associated with recreational and subsistence opportunities for hunting, fishing, trapping for food and fur, the gathering of fruit and berries and for non-extractive activities like wildlife viewing, ecotourism, paddling, sports, and hiking. Wetlands also provide for the seasonal requirements of many waterfowl and serve as important habitat throughout breeding, feeding, staging and over-wintering. All migratory waterfowl, many other birds, and half of all threatened and endangered species depend on wetlands and associated upland habitat for their existence.

Recognizing the importance of wetland conservation, in 1986 Canada and the United States (later followed by Mexico) signed the North American Waterfowl Management Plan (NAWMP, nawmp.wetlandnetwork.ca). The Plan committed the countries to long-term partnership projects assuring the survival and increase of waterfowl and protecting their wetland habitats. 24 joint ventures, ranging from species to regional-specificity, have been established to achieve the objectives of NAWMP. The province of Newfoundland and Labrador (NL) became a partner of the Eastern Habitat Joint Venture in 1989.

Eastern Habitat Joint Venture (EHJV)

The EHJV (ehjv.ca) conserves, enhances, and restores wildlife habitat for birds, especially wetlands, in the six eastern Canadian provinces of Ontario, Quebec, New Brunswick, Nova Scotia, PEI, and NL. Each province deals with wildlife habitat conservation issues slightly differently, depending on the unique requirements of each province and individual habitat concerns. Each provincial program, coordinated by a separate program manager, involves the cooperation of

international partners, including government agencies and non-government groups, each working to forward specific goals and objectives of the NAWMP. In NL, the program is administered by the provincial Department of Fisheries and Land Resources and Stewardship Association of Municipalities (SAM). Other local contributors include Ducks Unlimited Canada, Canadian Wildlife Service (a branch of Environment and Climate Change Canada), and Nature Conservancy of Canada.

NL Municipal Habitat Stewardship Program

In NL development occurs most regularly within municipal boundaries. Wildlife habitat within municipalities is often at the greatest risk of destruction and potentially in greatest need of conservation and/or management. As its primary contribution to the EHJV in NL, the provincial Department of Fisheries and Land Resources works with municipal councils to conserve significant wildlife habitat, especially wetlands, within planning area boundaries. The program's goal is to help make municipalities more aware of the value of 'their' wildlife and habitat and to empower them to take action to conserve specific significant areas. This helps lead to more informed development decision-making and minimizes negative impacts on wildlife and ecosystems. A Stewardship Agreement is a formal public commitment by a municipality and the province, to act together to conserve habitat for wildlife. By signing a Stewardship Agreement, municipalities become an important link in a continental chain of conservation areas. Nearly 40 municipalities have signed Habitat Stewardship Agreements in NL. (Figure 1).



Figure 1. Map of Habitat Stewardship Agreements signed in Newfoundland and Labrador

Roles of Stewardship Agreement Signatories

After the signing of a formal Habitat Stewardship agreement (Garnish agreement shown in Appendix 1), a Habitat Conservation Plan is prepared in consultation with the community (this plan). The plan offers best management practices, recommendations, and advice for conserving, enhancing and/or managing the wildlife habitat. Once the Habitat Conservation Plan has been accepted by council it is then incorporated into the town's existing or future municipal plan, operating plan, or master plan for use during future development decisions. A Stewardship Agreement is signed with the idea that when land use decisions are made, the value of wildlife habitat will not be forgotten and that future activities will not have a negative impacts.

The Province: The Minister was the designated signatory on behalf of the province. The Department of Fisheries and Land Resources administers the Eastern Habitat Joint Venture in Newfoundland and Labrador and works closely with SAM (Stewardship Association of Municipalities) on its implementation.

Now that the Stewardship Agreement has been signed, staff of the Department are expected to:

- Write a Habitat Conservation Plan in consultation with the Town (this plan)
- Review any proposed developments within the Management Units that may impact that wildlife habitat (page 14)
- Support the town and local groups in implementing the Stewardship Agreement and Habitat Conservation Plan.
 - This includes assisting the Town in carrying out, where appropriate, education to raise awareness of wildlife and habitat conservation issues (such as those discussed in Section 5).
 - Assisting the town in restoring or enhancing wildlife habitat (discussed in Section 5).
 - Such activities are often carried out in partnership with the agencies of the NL Eastern Habitat Joint Venture.

The Town: Now that the Stewardship Agreement has been signed, the Town of Garnish and its designated Mayor and Council are expected to:

- Ensure that significant wildlife habitat areas designated as Management Units are protected from destruction or degradation.
- **Contact EHJV program manager at the Wildlife Division within 30 days** (709 637 2013) when activities are proposed that may impact that habitat (page 14)

- Incorporate the Stewardship Agreement and Habitat Conservation Plan into the next Municipal Plan draft or revision with the assistance from the Department.
- Educate residents, staff and development planners about the stewardship program and their responsibilities, with the assistance of the EHJV partners.
- Implement, over time, the Habitat Conservation Plan recommendations in the community at large, with the assistance of the EHJV partners.
- Participate in SAM (Stewardship Association of Municipalities), a province-wide organization made up of municipalities with signed Stewardship Agreements.

Section 3: Wildlife and Wildlife Habitat in Garnish

Garnish is located on Fortune Bay on the western side of the Burin Peninsula and has a population of 568 (2016 Census). Regional attractions include Frenchman's Cove Barasway and Provincial Park, Frenchman's Cove-Garnish 10K road race, fishing, hiking, beaches, birdwatching, and sight seeing. Industries include inshore and bank fishing (for crab, shrimp, and lobster), agriculture, industrial projects, and tourism. Many commute to work in surrounding areas such as the fish processing plant in Marystown.

In 2012, important wildlife habitat was found within the municipal planning area of the Town of Garnish. Wetlands within the municipality form individual links of waterfowl migration routes for a wide variety of both wetland and upland bird species. There is ideal habitat for a large number of songbirds, mammals, and fish within the town's planning area. A list of the ~90 bird species sighted inside the municipal boundaries of Garnish can be found in Appendix 2. The two Management Units in Garnish (Figures 2-4) encompass 84 hectares (208 acres).

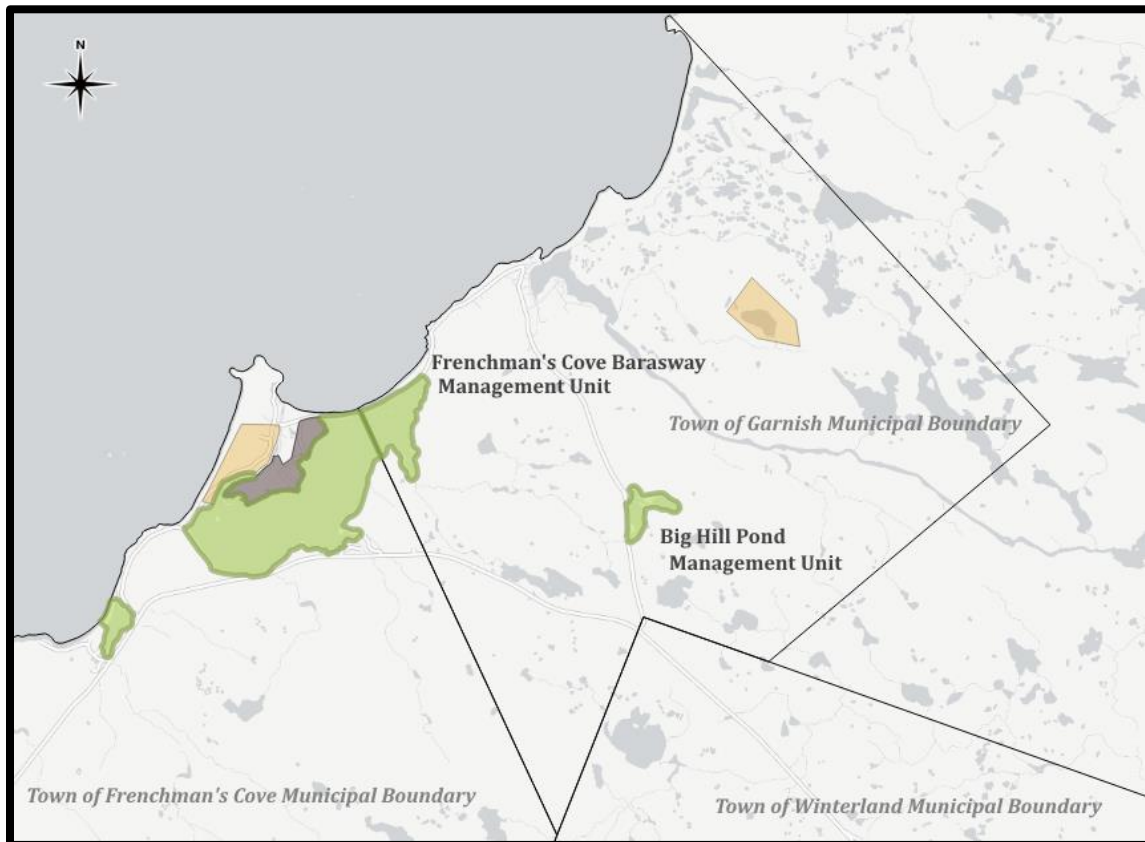


Figure 2. Map of the two Garnish Management Units
Management Units are shown in green; Frenchman's Cove Provincial Park is shown in brown and public water supply areas in orange.



Figure 3. Frenchman's Cove Barasway Management Unit, Garnish
Photo by Wildlife Division



Figure 4. Big Hill Pond Management Unit
Photo by Wildlife Division

Existing Land Use and Its Potential Impact on Wetlands and Wildlife

Residential/Commercial Development

For the most part, residential development in the area is minor. Developments should be treated with caution to reduce the impact on these species and to limit the amount of habitat loss. Any possible future development inside the Garnish Management Units should be referred to the EHJV program at the Wildlife Division for comment (as discussed on page 14) to ensure that it is reviewed from a wildlife habitat perspective.

Fishing

Many lakes and rivers in and around Garnish support healthy populations of trout, salmon, and other fish. Anglers should be reminded that waterfowl are easily disturbed during the nesting and brood rearing period (May to mid-June). Broods are very susceptible to predation when left unattended and during the nesting period adult waterfowl will often abandon the nest if disturbed. If docks or other structures are being constructed, nesting sites should be avoided.

Tourism/Recreation

Recreational and tourism opportunities exist in Garnish and surrounding areas, for example recreational canoeing and kayaking activities. This also provides a great opportunity to raise awareness and educate visitors and residents about waterfowl within the community and the importance of wetlands. Recreational activities, such as hiking and walking, are also popular activities for many residents and visitors of Garnish and are encouraged in these Management Units.

All-Terrain Vehicle (ATV) Use

ATV users want to enjoy beautiful landscapes and a healthy outdoors. Increasingly, ATV riders know they play an important role in maintaining these landscapes so everyone can enjoy them. Many riders take care to avoid unnecessarily damaging the outdoors. ATV use which is minimized to conform to the terms of the All-Terrain Vehicle Use Regulations (1994) will help to keep the important habitats in Garnish intact, healthy, and productive. This includes using established trails, not crossing over wetlands and bogs unnecessarily, and crossing streams at designated points. SAM can provide to you free of charge stacks of brochures called "Fish Habitat and All-Terrain Vehicles, Newfoundland and Labrador" which can help explain best practices to reduce habitat damage. These could be provided to local community groups, at festivals, and kept at the town hall as a free resource for all. In the case of ATV use which is damaging habitat, Department of Fisheries and Land Resources Conservation Officers can enforce the Motorized Snow Vehicles and All-

Terrain Vehicles Act/Regulations and can charge ATV users for habitat damage under this Act.

Fish and Wildlife Enforcement

Fish and Wildlife Enforcement Officers can also enforce the above regulations and can be contacted 24/7 at 1 877- 820- 0999. However, they are also able to deal with a wide variety of other wildlife-related enforcement issues and are a good contact for poaching issues, hunting in inappropriate areas, and all types of illegal hunting. For more information, your regional office in Winterland can be contacted at 709 279 3743.

For enforcement officers to fully understand the problem and to be able to pursue a case, it can be very helpful to provide as complete a picture as possible of the problem, with specific details. Without these details, it can be difficult for enforcement officers to properly follow up. **Appendix 3** provides a form that can serve as a template for reporting possible wildlife enforcement issues. It can be used by Council or by residents, provided in printed copies to residents at meetings and events, or kept at the Town Hall for easy access. Developed in conjunction with provincial wildlife enforcement officers working in your region (Eastern), this form may help your Council or your residents to record information about possible problems with wildlife or habitat.

Enforcing regulations such as these can be complicated, especially where federal/provincial jurisdiction overlaps and different species are covered by different laws. Partnering with provincial enforcement officers to ensure accuracy, SAM has produced a guide about conservation enforcement issues which can be found at **samnl.org/enforcement**.

Section 4: Policies for Habitat Conservation

Activities within the Management Units will be permitted if they do not result in the loss of wildlife habitat or wildlife populations. Conservation will be at the forefront of management decisions. For example, hiking, walking, birdwatching, cross-country skiing, snowshoeing, and geocaching are popular activities in many Management Units across the province. Efforts may be made to reduce pre-existing habitat degradation within Management Units. Management Units do not affect hunting, trapping, or fishing rights, such that where hunting, trapping, and/or fishing are safe and legal in a certain area, they will remain that way after a Management Unit is designated. Development proposals which impact habitat or wildlife within the Management Units must be forwarded to the EHJV program at the provincial Wildlife Division (709 637 2013) for comment with a thirty (30) day notice period.

Incorporation of Management Units in the Municipal Plans

During the preparation of any draft Municipal Plan, or during the process of a future Municipal Plan Review, the Town Council will incorporate the Stewardship Agreement into any resulting Municipal Plan or related Master Plan. **Specifically, these Management Units shall be zoned Open Space Conservation, Environmental Conservation, Open Space Recreation, or some similar consistent zoning designation within any future municipal planning documents as governed by the Urban and Rural Planning Act (2000).** In approving permits, regulations or by-laws related to the area's designation within a Municipal Plan, or any amendments to a future Municipal Plan which could affect the Management Units, Council will consult with the EHJV program manager (709 637 2013) at the Department of Fisheries and Land Resources.

As another conservation option, if in the future, an environmentally important area of interest falls outside Municipal Planning Area boundaries, Garnish could also petition the provincial government to have it designated as a "protected area" under section 31 of the Urban and Rural Planning Act, 2000.

Riparian Buffers

Riparian buffers are strips of untouched vegetation occurring between upland areas and wetlands, lakes, rivers, ponds and streams. They are composed of trees, shrubs, grasses, cattails, and sedges and often provide for a high level of wildlife use, generally as corridors for travel, for protection from predators, and against inclement weather. These areas filter and reduce surface water runoff from upland areas, trapping sediment and filtering out excess nutrients, pesticides and bacteria.

Vegetation in riparian areas also affects how readily water enters soil and has a positive effect over the replenishing of local groundwater. They also serve to anchor soil with its roots, helping to build stream banks and prevent erosion. They are often important in controlling flood levels and are critical to a variety of plants and animals. Fish habitat quality is also influenced by the amount of riparian edge left along shorelines. Treed buffers provide shade and serve to keep water temperatures down, also impact water quality; they provide spawning and rearing areas for fish species, and nesting areas for waterfowl. They also serve as a food source for wildlife when leaves, insects, and larvae drop into the water body off surrounding trees and shrubs. Restoration projects can rebuild riparian areas; **Appendix 5** provides suggestions for possible plant species to be used, and Section 5 contains contact information professionals with experience in environmental restoration.

The province, via the provincial Lands Act – Section 7(1), requires a crown land reserve or easement of 15 metres along all water bodies greater than 1 metre in width and the maintenance of permanent riparian areas next to watercourses within the province. It is important that the town ensures awareness and adherence to this crown land reserve designation by all residents/business. The vegetated (untouched) buffer exists as the *minimum* protection around all waterbodies and marsh areas and is critical within the designated Management Units. Agriculture, ATVs, and cabin development can cause disturbance to riparian vegetation.

Management by Committee

It is recommended that the Town of Garnish manage their Management Unit and Habitat Conservation Plan via a committee of council. Depending on the town, they are variously called *Environment Committee*, *Environment and Trails Committee*, *Advisory Committee on the Environment*, *Management Committee*, or *Habitat Committee* but you are free to choose the name that suits your town and residents best. Usually these committees are chaired by a member of council with volunteers from the local community making up the remainder of its membership. It has been our experience that such, often dedicated and dynamic, committees often have greater success in raising the profile of the environment and the wetland protected areas within the larger community thereby increasing public understanding and support over the long-term. Many of these types of groups have found benefits in reserving spots in the group for a younger person, a high school student, or both. By involving locals, a greater sense of ownership is fostered which can strengthen conservation commitments. These committees can organize events, apply for grants, conduct cleanups and other projects, host hikes and walks, and many other activities including those described in Section 5.

Stewardship Association of Municipalities (SAM)

When a municipality signs a Municipal Habitat Stewardship Agreement with the province, it becomes a member of the Stewardship Association of Municipalities Inc., also known as SAM (**samnl.org**). SAM is an incorporated, non-profit organization whose member municipalities together secure, enhance and restore important wildlife habitat in the province while balancing municipal development with conservation. SAM maintains a public page about your agreement at **samnl.org/garnish** featuring maps, photos, facts, and information on local attractions. Please link to this page from your town's website; this will help increase residents' knowledge and understanding of the agreement and program.

SAM represents its members on issues of common concern related to wildlife habitat conservation. SAM meets each spring (May or June) and fall (September or October) with host municipalities rotating among members and regions. We encourage you to identify a representative of your town to attend at least one of these meetings per year. This will serve as a significant connection for your town to like-minded municipalities and link you to resources and training. Perhaps you may even be interested in hosting a SAM meeting in the Town of Garnish in the future; many municipalities enjoy this for the exposure it provides for their wildlife habitat and associated projects.

Section 5: Habitat Conservation and Education Strategies

The following section presents ideas for community education, engagement, and habitat enhancement that could be implemented over time in and around Management Units. We encourage council to engage its related committee or other conservation organizations including SAM in activities which meet your needs and interests. The strategies outlined in this Habitat Conservation Plan can provide many recreational and quality-of-life benefits for residents. Community engagement and partnerships are the true strengths of any stewardship agreement.

Wetland habitats are often ideally suited to a variety of consumptive and non-consumptive recreational activities, including fishing, hiking, canoeing, photography and bird-watching. The Town of Garnish may wish to use these opportunities to increase tourism to the region; interpretive signs can help both residents and tourists connect with the area. In developing employment, recreational and tourism opportunities, careful consideration for wildlife must be included in the planning process. Otherwise, human activities may result in negative impacts to the resource that provides the attraction.

One important benefit that people receive from stewardship is the opportunity to increase their knowledge of nature. Many of these projects can be easily conducted by local groups, allowing hands-on involvement in conservation efforts. Many communities across the province who have signed stewardship agreements have had great success becoming involved in exactly these types of projects and will also be resources for you to connect with, especially at SAM meetings.

Many of the ideas below have been developed following the public event, “Birds and Wetlands: A Planning Workshop and Celebration,” in 2015 at the Grand Meadows Golf Club. During this workshop, the 7 participants from the Town of Garnish identified illegal cutting and illegal hunting as priorities for action. For this reason, an enforcement form has been provided below, and additional information related to enforcement.

Grants and Funding

Many of these activities and programs are free or can be funded through small community grants and via partnerships. SAM provides a regularly updated listing of many relevant grants at samnl.org/funding-opportunities.

Large grant applications may take several months to prepare if committees are involved. Allow enough time to apply for these grants and to obtain the letters of support that local partners such as SAM or the Department of Fisheries and Land Resources may provide; keep an eye on deadlines as they approach.

Local partnerships

The Heritage Run Tourism Association may be an appropriate partner on projects in Garnish. Sharing a CCNL Green Team with neighbouring towns might be something to discuss as well, especially if other towns are beginning environmental projects as well. The nearby Towns of Frenchman's Cove, St. Lawrence, and Winterland are active SAM members as well; they are familiar with the Garnish agreement and might be interested in future regional collaborations. There is also a local Ducks Unlimited Canada chapter in Marystown. As one of the EHJV partners, Ducks Unlimited Canada is often an excellent partner for education and restoration projects in towns with habitat stewardship agreements; they can be contacted at du_newfoundland@ducks.ca or 709 237 DUCK.

Trails, Interpretive Signage and geocaches

Many communities, including SAM members, have found that trails increase recreation and health for residents and improve tourism possibilities. Trails in Management Units, when planned and constructed carefully, can increase a sense of stewardship by allowing people to discover new areas. They can also help residents and visitors strengthen their connection to nature, especially where interpretive signage is used to help point out interesting landscape and wildlife features.

Geocaches (small containers found via GPS; **geocaching.com and various mobile apps such as c:geo**) can be added alongside trails as well to provide a fun and inexpensive activity for walkers, hikers, and groups. It is a great idea to place geocaches near or at where you want people to go – to help them discover a new trail, a beautiful lookout, or an interpretive spot, for example.

Approximately 20 geocaches already exist in the Town of Garnish, making this area an active one for geocachers. SAM and the EHJV partnership (username EHJV_Stewardship) currently maintain 31 geocaches in SAM municipalities across the province. After creating a geocaching account (or logging in first), the full list can be found at geocaching.com/seek/nearest.aspx?u=EHJV_Stewardship. A geocache has already been placed by SAM in the Town of Garnish; details can be seen at geocaching.com/geocache/GC6MFKA_garnish-stewardship-cache

As part of the stewardship agreement, the Town of Garnish has been provided with one large highway road sign, and smaller interpretive signs are possible in the future (Figure 5). These can be placed at suitable locations of your choosing, and could be chosen to highlight trail locations. Additional interpretive signage could possibly be funded through grants to the Town of Garnish; for example the TD Friends of the Environment Foundation funds trail and park projects (see funding opportunities link above for other possibilities)

WELCOME TO STEADY BROOK'S

MUNICIPAL HABITAT Stewardship Areas

The Town of Steady Brook and the Government of Newfoundland and Labrador signed a Municipal Habitat Stewardship Agreement in July 2011, committing to the conservation and enhancement of wildlife habitat within the town's planning boundaries.

Two Management Units within the Town of Steady Brook cover approximately 27 acres of wetland habitat and include the mouth of Steady Brook and its adjacent cattail marsh, as well as a small marsh near the eastern end of the town's boundaries.

Mouth of Steady Brook and Adjacent Cattail Marsh:
 Located where Steady Brook joins with the Humber River and is comprised of shallow channels of open water surrounded by overhanging shrubs, primarily Sweet Gale (*Myrica gale*).

The adjacent marsh contains a large quantity of shallow, open water separated by a patchwork of emergent vegetation such as Cattail (*Typha latifolia*), which dominates the area.

Grasses, such as Reed Canary Grass (*Phalaris arundinaceae*) and Rushes (*Juncus* sp.), provide suitable feeding and nesting habitat for many waterfowl species.

Marsh at the Eastern Boundary of Steady Brook:
 Located along the edge of the Humber River at the eastern end of the town and also contains habitat suitable for nesting and staging waterfowl and other wildlife species. This area is located on private property and is not accessible by land.

The marsh is partially inundated and dominated by tall emergent grasses, rushes, sedges and other herbs and shrubs such as Blue Flag Iris (*Iris versicolor*), Horsetail (*Equisetum* sp.) and Sweet Gale (*Myrica gale*). Adjacent upland habitat surrounding this wetland consists primarily of mixed boreal forest.

The Town of Steady Brook is a leader in wildlife conservation in a chain of committed partners across North America. In eastern Canada, this partnership is known as the Eastern Habitat Joint Venture (EHJV).

Explore Steady Brook's wildlife diversity

Waterfowl
 American Black Duck (*Anas rubripes*)
 Common Goldeneye (*Bucephala clangula*)
 Common Merganser (*Mergus merganser*)
 Ring-necked Duck (*Aythya collaris*)
 Common Loon (*Gavia immer*)

Songbirds
 American Goldfinch (*Carduelis tristis*)
 Cedar Waxwing (*Bombusilla cedrorum*)
 Song Sparrow (*Melospiza melodia*)
 Tree Swallow (*Ichthyura bicolor*)
 Pine Siskin (*Carduelis pinus*)
 Dark-eyed Junco (*Junco hyemalis*)
 Black and White Warbler (*Mniotilta varia*)
 Blue Jay (*Cyanocitta cristata*)
 American Robin (*Turdus migratorius*)

Other bird species:
 Belted Kingfisher (*Megasceryle alcyon*)
 Red-winged Blackbird (*Aegializus phoeniceus*)
 Common Grackle (*Quiscalus quiscula*)
 Common Raven (*Corvus corax*)
 Osprey (*Pandion haliaetus*)
 American Bittern (*Icthyophaga lutescens*)

Other wildlife species:
 Beaver (*Castor canadensis*)
 Muskrat (*Fiber zibethicus*)
 Mink (*Mustela vison*)
 Snowshoe Hare (*Lepus americanus*)
 Atlantic Salmon (*Salmo salar*)
 Brook Trout (*Salvelinus fontinalis*)
 American Eel (*Anguilla rostrata*)

Figure 5. Example of the SAM interpretive sign
 This interpretive sign measures 2 x 3 feet and can be provided to interested SAM municipalities as time and funding allow.

Wildlife Watching

Local groups and interested volunteers can watch and monitor birds, plants, and wildlife in all areas of the Town but, particularly, within Management Units. Data collection can provide information on changes that are occurring within a wetland or other area and can indicate problems or progress. By involving residents, the profile of the area is enhanced to the long-term benefit of conservation. A variety of programs and apps are available for wildlife monitoring; iNaturalist and ebird are two of the best.

When entering data, there is no need to guess the species - it is acceptable to record a species as unknown. Birding workshops and lots of practice in your local area will make you proficient at identifying species common to your area.

iNaturalist is an especially good smartphone app for those interested in learning to identify plants, butterflies and other insects, other invertebrates, birds, fungi, and mammals. It has a neat feature where other experts will identify your sightings for you! You can snap a quick photo of a plant and it will often be identified within 24

hours. This can be used to build plant and wildlife lists of your management unit, as a learning tool, for school students, and for fun. Make sure to turn your location services on so that your sighting can be found on the map and so others can help with your identifications.

ebird.org is a free, easy-to-use website and app to record your sightings and provide valuable information to help us gain a better understanding about our birds. It is already being used to record the birds of Frenchman's Cove and is popular with visitors. In NL in 2016, over 280 species of bird were recorded on ebird.org and over 11,000 individual lists were submitted!

Explore all bird sightings in Newfoundland and Labrador (click map to zoom to your area) at ebird.org/ebird/canada/subnational1/CA-NL?yr=all

Start contributing to eBird at secure.birds.cornell.edu/cassso/account/create

3 eBird Hotspots already exist in the Town of Garnish:

NL--Garnish - ebird.org/ebird/hotspot/L1879789

NL--Frenchman's Cove Barasway - ebird.org/ebird/hotspot/L3916802

Garnish--Noreast Sod Farm - ebird.org/ebird/hotspot/L3916795

You'll need:

- Field notebook & pencil (and/or app)
- Phone (for safety, recording start and end times, and/or using an app)
- Bird field guide
- Binoculars and/or a spotting scope
- Appropriate outdoor clothing

Be mindful of tides and wetland (damp, soft, slippery) habitat, making safety your top priority. Common sense is important; aim to cause as little stress and disturbance as possible to birds and other animals.

Conservation Corps Green Teams

Conservation Corps Newfoundland and Labrador (**ccnl.ca**) annually sponsors summer Green Teams and Interns, generally post-secondary and high school students, to work within communities on environmental projects. Communities with Stewardship Agreements have often applied for and received Green Teams. Examples of potential projects could include nest boxes, bird houses, bird monitoring, trail maintenance, community outreach, wildlife surveys, and developing field guides. Green Team members could help train local high school students or community members in monitoring and could develop educational material designed to raise awareness for conservation and stewardship initiatives.

Artificial Nesting and Loafing Structures

Island Construction

Many wildlife species, such as terns and waterfowl, nest and loaf on islands due to a reduced risk of predation from land-based predators. Many species in wetlands benefit from the construction of artificial islands. These structures can be constructed simply from wooden cribs (Tamarack / Larch would be an appropriate choice for building material), measuring approximately 4 m² that have been filled with rock and soil.

The islands must be positioned so that they are higher than the highest water mark. Hardy shrubs and herbaceous plants (e.g. alder, willow) must be planted on the islands to provide cover and to prevent occupancy from gulls. Care must be taken to prevent the use of toxic construction materials (e.g. treated wood, contaminated soils) and disturbance to plant and animal communities.

Other forms of artificial islands involve planting native marine plant species into landscaping fabric, which is then fixed to floating structures made of plastic piping or empty gabion baskets (metal mesh cages). This type of floating island requires careful placement in areas that do not have widely fluctuating salinity levels and require placement such that disturbance would be minimal when roots are establishing. Floating islands may be beneficial in terms of oxygenating the water column, as algal blooms would not smother the highly perched plants. The floating plants should, ideally, continue photosynthesizing despite the presence of algae, and may be of benefit in absorbing excess nutrients to deter algae growth. Annual removal and reinstallation of islands may be necessary in response to ice conditions in tidal areas.

Cavity Nesting Waterfowl

Cavity nesters such as the Common Goldeneye (also known as pie duck or whistler, *Bucephala clangula*) use abandoned woodpecker holes or natural tree cavities caused by disease, fire or lightning. In the absence of these natural cavities, they will also use constructed nest boxes (Figure 6, Appendix 4). They need to be placed correctly; the guide at samnl.org/nest-boxes will help you get started and printed laminated books and brochures from Ducks Unlimited Canada are also available to help you.

Boxes should be placed above typical high water levels at a height that still allows you to clean and monitor the boxes each year. Ideally, boxes will be placed as high as possible, but at least 4 to 6 feet (1.2-1.8 m) above the water's surface. When ducklings are ready, the adult will force them out of the entrance of the nest box and it is important that the box be positioned appropriately or the duckling may not fledge successfully. Badly placed boxes can jeopardize lives of ducklings.



Figure 6. Cavity Nest Box, Cobb's Pond, Gander
Photo by Wildlife Division

The entrance hole should face the water. Do not place boxes so close together that competition will occur. Boxes should be placed no closer than 50 meters (164 feet) apart (one box per acre is acceptable) and shouldn't be placed where ducks can see each other from neighboring boxes. Clear a path (of any small branches, etc.) so that ducks have a direct line of access from the water and trim limbs on top of the box so that squirrels and marten cannot access the box. Mark the location of the nest boxes using GPS on your phone or with a GPS unit and send to du_newfoundland@ducks.ca to participate in their program.

Place 8-10 cm of planar wood shavings in the bottom of the box before breeding season. Hens will reject nest boxes that do not have shavings, and eggs could freeze if there are not enough shavings in the bottom of the box. Boxes must be maintained **every year** (winter is the preferred time for maintenance) by scraping out old shavings and replacing with new shavings.

Common Goldeneye can raise multiple broods in a well-maintained and suitably placed nest box. If you are lucky, you will get to see ducklings leaving the box (although you should avoid approaching the nest box to check on its use during important times like hatching and fledging), but mostly you will find signs left in the box when you prepare for its annual maintenance. Look for light coloured duck down, bits of egg shell or shell-membrane (like a piece of paper). Ducklings in the area indicate there are breeding adults nearby and it is quite possible that they have used the nest boxes provided. It is also a great idea to keep in mind that other birds and small mammals may use the nest boxes as well.

Roosting and nesting structures for other species

There are a variety of roosting and nest structures (**Appendix 4**) which can be built, installed and monitored/maintained for other bird species such as Tree Swallows (*Tachycineta bicolor*), Northern Flicker (*Colaptes auratus*), Great Horned Owl (*Bubo virginianus*) and for bats (Figures 7 and 8). The increase in tree swallow population that may occur with these boxes can prove beneficial in that many bird species (as well as bats) feed on insects and may serve as natural pest control. In addition, providing structures for predatory birds may also help reduce (or keep in check) populations of birds that may not be desirable [e.g. American Crow (*Corvus*

brachyrhynchus), European Starling (*Sturnus vulgaris*)] and rodents such as mice while increasing biodiversity.

Installing nest boxes and roosting structures is a very exciting activity to help enhance wildlife in areas around your community. It does, however, take time, commitment and maintenance.



**Figure 7. Bat Roosting Box in Salmonier Nature Park
Photo by Wildlife Division**



Figure 8. Bat Box in Pynn's Brook, Western Newfoundland
Photo by Wildlife Division

Educational Programs

Public education can help foster a greater sense of habitat stewardship among town residents. Even interpretive signs (including the ones provided by SAM, Figure 5) can contribute to an increased understanding and appreciation of local wildlife. Newfoundland and Labrador Environmental Educators (NLEE) hosts a list of environmental education programming that is searchable by subject and grade level at nlee.ca/programs-and-lessons.html

There are several excellent wetland education programs that span every season and age group including *Wetlands in Winter* (Tantramar Wetlands Centre, weted.com), *Marsh Bingo* and *Creatures of the Night* (Oak Hammock Marsh Interpretive Centre, oakhammockmarsh.ca), *Junior Naturalists* (Wye Marsh Wildlife Centre, wyemarsh.com), and *Project Webfoot* (Ducks Unlimited Canada, ducks.ca). Canadian Wildlife Federation's *Project Wild* can foster an increased environmental ethic in youth and adults alike. Many night programs also exist that would be appropriate for guide and scout groups.

Backyard Habitat for Canada's Wildlife

This initiative from the Canadian Wildlife Federation (cwf-fcf.org) is administered in conjunction with the Wildlife Division's Salmonier Nature Park (contact Ralph Jarvis for more information). This program enables you to become an active participant in helping wildlife by offering immediate, specific, and inexpensive suggestions on how to make life better for wildlife in a particular habitat and often includes a bird box workshop as well.

Nature and Art

Some stewardship communities have used the wetlands and associated wildlife as a natural location to bring together nature and art. This can be simpler if a central building or interpretation area is present on site. Local art classes and drama groups use the freedom afforded by an outdoor theatre for educational exercises. This could involve field trips whereby students could interpret natural beauty through various mediums (chalk, paint, etc.) or a day of sketching to the sound of nature or music. Being innovative in efforts to assemble art supplies might include visiting sites like crayola.com which offer special resource grants to educators.

Similarly, drama classes could develop a play or a series of dramatic readings based upon wetlands or nature with evening delivery within a lighted amphitheatre. Several amphitheatres in Eastern Canada utilize the open-air concept to show nature-related videos or videos with an environmental message outdoors in the evenings. Videos could be tailored to various ages and could include nature-related craft projects as a follow up. Good starting points for videos and educational nature-oriented projects for children include hookedonnature.org, planetpals.com, and hctfeducation.ca/resource-room

Hunter Workshops

A municipality may be able to partner with a local rod and gun club, the Department of Fisheries and Land Resources (Wildlife Division) and other partners to participate in hosting a *Youth Hunter Skills Workshop*. Perhaps the Northwest Arm Rod & Gun Club in Marystown (northwestarmrodandgunclub.ca) would be willing to partner for some of these events. These events are co-sponsored by the Wildlife Division and require significant volunteer commitment, organization, and expertise. However, they can be very rewarding for participants and foster a sense of stewardship among youth and teenagers. These workshops have taken place in communities such as Goose Bay, Gander, Lewisporte, and St. John's which have active rod and gun clubs or hunting associations nearby. Similarly, the *Becoming an Outdoorswoman* program can help introduce women in the community to sustainable, legal, hunting and fishing and is offered twice per year through the Wildlife Division in locations on both the east and west of the Island of Newfoundland; the current contact is Debbie Howell at Salmonier Nature Park (howelld@gov.nl.ca or 709 229 7888).

Ducks Unlimited Canada's Youth Programs

Project Webfoot

Educating youth about wetlands and waterfowl is a major part of Ducks Unlimited Canada's mission. The award-winning *Project Webfoot Wetland Education Program* (ducks.ca/initiatives/project-webfoot) is a comprehensive program linked to the senior elementary curriculum in grades 4 to 6 (habitats & communities, biodiversity, food webs and adaptations). Learning resources and field trips to a local wetland are available to classes that have been financially sponsored (often by a local business). There are also many teacher and student resources for Grade 4 through high school at ducks.ca which provide great links with the school curriculum. Contact the NL Conservation Programs Specialist at du_newfoundland@ducks.ca or **709 237 DUCK** for more information.

Wetland Heroes

Another program offered through Ducks Unlimited Canada includes *Wetland Heroes* (ducks.ca/initiatives/wetland-heroes) which improve and protect wetlands for wildlife and people in their local community. Whether you're one person, a group of friends, a class, club or school there are many ways you can make a difference from letter writing to fundraising and habitat enhancement projects and more. To become an official Wetland Hero, register at ducks.ca and describe the great conservation work that is being done to help protect wetlands in your community. Wetland Heroes receive a certificate and a special token of appreciation from Ducks Unlimited Canada. With permission, selected Wetland Heroes may be featured online and/or in print, and some Wetland Heroes may receive \$500 Awards of Merit.

Engagement for adults

It's not just kids that enjoy the outdoors – adults and seniors benefit greatly from spending time in nature as well. Birdwatching workshops have been successful in many SAM communities (such as Spaniard's Bay), and snowshoe hikes in the winter or hikes in the summer are often enjoyed by adults as well.

Themes can be used, such as tracking hikes, edible plant hikes, or winter ecology hikes, to increase interest. These can be inexpensive ways for adults in your community to discover the natural areas of the town, socialize, and learn something new. Ducks Unlimited Canada, an EHJV partner, can in some cases partner on trail projects in important wildlife areas if time and funding allows, and CCNL Green Teams are required to give interpretive presentations as a part of their summer work programs.

SAM provides six different interpretive field guides at samnl.org/interpretive-walking-tour-guides that could help Green Teams or summer recreational staff

lead hikes for residents and/or visitors to Garnish. On that page, we also have a **Guide to delivering interpretive hikes** which can assist you. The list of species found in **Appendix 2** are also meant to be a helpful resource for you. These could be used to create a small brochure that represents a 'bird checklist' of the Garnish area, or used as the basis for field guides for the area which could be developed by a Green Team, high school, or by your relevant committee.

Adults often enjoy using birdwatching towers or blinds (Figures 10-12) as well; these could be fun community building projects or completed with the help of a Green Team, committee, or volunteers. Corduroy Brook Enhancement Association (corduroybrook.org) in the Town of Grand Falls-Windsor has experience with these kinds of projects and would be a good contact as would the Town of Winterland, whose projects are featured below.



Figure 9. A wooden bird viewing tower
Photo from Creative Commons



**Figure 10. Enclosed bird blind with mural in Winterland NL.
Photo by Wildlife Division**



**Figure 11. Viewing deck in Winterland, NL
Photo by Wildlife Division**

Habitat Enhancement

In some wetland areas, habitat has been degraded or lost and could benefit from plantings. Some aquatic plant species improve water condition by absorbing excessive amounts of nitrogen, phosphorous, and carbon – substances associated with the occurrence of algal blooms. Many beneficial plant species have limited distribution in Newfoundland, and should not be introduced into the environment without consideration of the potential consequences, including the possibility of invasive plants out-competing native plant species. **Appendix 5** provides a helpful guide to plant species for restoration projects.

For example, Eelgrass (*Zostera marina*) is an aquatic grass known to have significant value for waterfowl and providing habitat for many aquatic species such as juvenile salmon and trout. It is possible to encourage the growth of eelgrass beds through an inexpensive project of habitat management and shoot transplantation from a nearby donor site. Some species of Willow (*Salix* sp.) and Alder (e.g. Green Alder, *Alnus viridis crispa*) are native to the island of Newfoundland and are renowned for their hardiness, ability to withstand tidal inundation, and extensive networks of roots.

Often, the natural balance within an ecosystem can be changed when new species are introduced. The relationships that develop between plants and animals may also change within a particular habitat. Introduced species are referred to as *exotic species* if they are not native to an area. Competition naturally exists between organisms within an ecosystem but the introduction of exotic, or non-native, species can alter the balance within the ecosystem and have negative effects upon the natural populations within the region and the ecosystem.

Various retailers throughout the province may have expertise in selecting, planting, and caring for native plants or experience with restoration projects. Timothy Murray, a landscape architect at Murray's Garden Centre and Horticultural Services in Portugal Cove is experienced with ecological restoration and can be contacted at timothymurray@murraysgardens.com or 709 895 2800 for potential projects. Nuthatch Nursery in Lethbridge NL (709 467 1309) also specializes in native plants. A wetland restoration project is in progress in the SAM community of Bonavista and lessons learned from this project will be shared with SAM members.

Litter Removal

Community groups and residents can work cooperatively to remove litter in and around the community on a regular basis. It is important to avoid locations where waterfowl may be disturbed during breeding, staging or brood rearing periods (generally May to August). Programs such as the Marine Institute's Ocean Net (mi.mun.ca) and the Great Canadian Shoreline Cleanup (shorelinecleanup.ca) assist communities in organizing litter cleanups, and a full comprehensive guide to

how to host your first litter cleanup is at shorelinecleanup.ca/sites/default/files/gcscstaff/SC_Guide_EN.pdf

To increase public participation in your cleanup, try directly inviting other local groups like your 50+ club, trail clubs, local business owners, your closest Ducks Unlimited Canada chapter, or the snowmobile federation. You can also list it for free with NLEN (nlenvironmentnetwork.org, then go to Events > Submit an Event). NLEN will advertise environmental events from municipal governments, so this advertising possibility would not be limited to litter cleanups. Many radio stations will also read announcements on air for free (many just require a quick online submission of your event); communitysector.nl.ca/mediaroom has a list of media contacts which can be searched by area. MMSB also provides community grants to municipalities to help with waste reduction and illegal dumping; more info on their municipal programs is at mmsb.nl.ca/partners/municipalities

Reducing Litter

At the “Birds and Wetlands” workshop in 2015, we heard that participants from Garnish were concerned about litter and interested in taking action to reduce it. The following ideas are pulled from “A Guide to Reducing and Managing Litter, 2015” as well as research papers by Schultz et al. and Bator et al.

- Make garbage cans available, convenient, and easy to use. (More people will do the right thing when it is made easier)

Reason: More people litter when garbage cans are farther away. Areas that have added enough garbage cans have seen reductions in litter in a short period of time.

- Host, or pay for, consistent, ongoing cleanups. Stick to a consistent, written, well-known schedule, such as the 1st of every month (or the 1st of every week) in problem areas (because then you can stay on top of the problem and generate awareness)

Reason: Obviously cleaned areas have lowering littering rates, because a clean setting sends the specific message that not littering is the expected, normal behaviour

- Don't let litter accumulate. Have a plan in place for who will deal with unexpected litter that appears 'off-schedule' (see above). Do not rely on individual citizens to report litter; have staff or community groups scan areas frequently.

Reason: Litter attracts more litter. People are more likely to litter in areas that already have litter

- Use landscaping, gardening, and beautification in problem areas

Reason: People litter less in areas that appear to be well taken care of

- Ask local businesses to include messages on their packages (such as “Keep Garnish clean” or “Keep NL clean”).

Reason: Messaging can reduce a portion of the litter

- Put up posters in the community and inside local restaurants or other sources of litter (help everyone know that the community intends to reduce litter).

Reason: Public engagement may convince people to do the right thing

- Use positive messages (such as “Do your part”, “Help keep your town/Garnish/the Burin beautiful”) rather than negative messages (such as “Don’t litter”).

Reason: Positive messages have usually (but not always) been shown to be more effective than negative messages. One study conducted with university students even found that a sign saying “Please don’t litter” actually increased litter!

- Incorporate schools. Often community cleanups are the same few people, on weekends. Having students involved can help promote change. They can even use it for a scientific study – free forms from the Great Canadian Shoreline Cleanup, for example, have participants count and tally all the items, which would be great for math or social studies

*Reason: Most studies have shown that younger people litter at higher rates than older people. Involving a school can help to target an age group that *may* be responsible for a large proportion of the litter*

- Have a community campaign. Offer a small prize or a gift card to the school student who designs the best anti-litter poster. This could be use for a school art or English language project in local schools.

Reason: Help young people (who often contribute to litter problems, see above) feel pride in their community and become directly involved in the problem.

- Suggest a solution. If garbage cans can’t be in every area, tell people directly how they can reduce litter (for example, “Take your garbage with you”, “Put it in your pocket”, “Take your garbage home” or “keep a garbage bag in your car...don’t throw it out the window” etc)

Reason: Many people will do the right thing when they understand it is strongly desirable and when presented with tips or options. Messaging such as this can suggest that the community is aware of the problem and monitoring it – they’re watching out for litter!

Litter is a complex issue and we’re still trying to understand what causes it. Most studies to understand litter have been done outside Newfoundland. If one of the above tips doesn’t seem to make sense for your community, try replacing it with an idea of your own. What will work in one town will probably not work in every other town. Good luck!

Town Photographer

At least one SAM community we know of has an innovative approach to collecting photographs – they pay an individual resident a small monthly honorarium to take photos of landscapes, wildlife, and events in the town. Garnish is a beautiful town, and more photographs could serve to highlight the natural beauty of the area which could help increase tourism and recognition. These photos could be used on the town's website in a section about nature or recreation, and also put on the town's Facebook, on relevant TripAdvisor destinations, and sent to your regional Destination Management Organization or DMO (Legendary Coasts, **legendarycoasts.com**) to help raise the profile of these beautiful areas of the town. An online presence is a very powerful tool for a community and great photographs can contribute to improved tourism.

Habitat Restoration Projects in Garnish

As noted in the Garnish ICSP (Integrated Community Sustainability Plan), the restoration of the Garnish River is of interest as a potential project. The objective of this project would be to clean and maintain the watershed while protecting its wildlife. The ICSP described that this would be accomplished through a committee to oversee the projects, possible restoration of fish stocks and improved enforcement of proper forestry regulations around the watershed. This is a potential future project for the Town and SAM/Wildlife Division may be able to offer support. The Coastal Restoration Fund (**dfo-mpo.gc.ca/oceans/crf-frc/index-eng.html**) might be a suitable grant for this project and can be discussed with the SAM Conservation Biologist (**samconservation@gmail.com**).

Conclusion

We hope the ideas in this guide have started you thinking about possible ways your committee and your community could become involved in protecting and enhancing wildlife habitat in your area. Keep an eye on **samnl.org**, our newsletter, and our social media, where additional resources are added regularly – and we'll hopefully see you at the SAM conferences each year. Remember, community involvement is the true strength of a Stewardship Agreement!

Appendix 1: Garnish Municipal Stewardship Agreement



MUNICIPAL HABITAT STEWARDSHIP AGREEMENT

THIS AGREEMENT made at Frenchman's Cove, in the province of Newfoundland and Labrador, this 8th day of October, 2013.

BETWEEN: **HER MAJESTY THE QUEEN IN RIGHT
OF NEWFOUNDLAND AND LABRADOR,**
as represented by the Honourable the Minister
of Environment and Conservation
(herein called the "Minister")

- of the one part -

AND: **THE TOWN COUNCIL OF THE TOWN OF
GARNISH,**
a municipal corporation pursuant to Section 15 of the
Municipalities Act, 1999 (herein called the "The Town")

- of the other part -

WHEREAS the Government of Newfoundland and Labrador has entered into an Agreement with others for the implementation of the of the North American Waterfowl Management Plan through the Eastern Habitat Joint Venture;

AND WHEREAS the parties hereto recognize that the proper protection and management of wetland and upland habitats are fundamental tools in maintaining and enhancing wildlife populations in the province;

AND WHEREAS the Minister proposed that certain important wetlands and associated wildlife habitats within the Town be protected and enhanced through and with the cooperation of the Town in accordance with this Agreement and a Habitat Conservation Plan developed hereafter;

NOW THEREFORE IT IS AGREED BY THE PARTIES AS FOLLOWS:

1. The lands herein delineated and designated as a Management Unit (being the lands outlined on a certain Schedule annexed hereto and marked "A") shall be managed in accordance with the terms and conditions of this Agreement including any Habitat Conservation Plan developed hereunder for better protection of the wetlands for waterfowl and other wildlife.
2. Within the limits of its jurisdiction, the Town shall permit only those activities within the Management Units that have no negative or adverse impact upon the wetland habitat or the waterfowl or other wildlife which utilize those habitats.
3. The parties may establish other Management Unit as may be desirable from time to time. The Management Units shall be subject to the terms and conditions of the Habitat Conservation Plan developed to enhance and protect the wetland habitats, the waterfowl and other wildlife which utilize those habitats.
4. The Habitat Conservation Plan shall be developed in cooperation with the Town and the Minister agrees to provide such advice and expertise necessary or advisable for the development of the Habitat Conservation Plan.
5. The Town agrees that in the preparation of a Municipal Plan for the Town or any amendments to any existing Municipal Plan, the areas designated as Management Units shall be recommended by the Town to be appropriately declared protected areas as it prescribed under subsection 13(3)(f) of the *Urban and Rural Planning Act (2000)* (or such other legislation in amendment or substitution therefore as may be brought into effect from time to time). The Town in passing regulations or by-laws related to the protected areas so designated under the Municipal Plan or amendments thereto and which may affect the Management Units shall do so in consultation with the Minister and in keeping with the principals of this Agreement.
6. The parties to this Agreement, their consultants, servants or agents, shall have and exercise reasonable rights of access to the Management Units for all purposes necessary or incidental to this Agreement and in particular, but without limiting the generality of the foregoing, for the purpose of developing and carrying out the Habitat Conservation Plan.

7. Each of the parties hereto agree that they will exercise their best efforts to further develop management measures for more effectively carrying out of their mutual intentions as expressed in this Agreement.

IN WITNESS WHEREOF the parties have caused these presents to be executed in accordance with their respective rules and regulations the day and year first before written.

SIGNED, SEALED AND DELIVERED

by the Honourable the Minister of Environment and Conservation in the presence of:


Witness


THE DEPARTMENT OF
ENVIRONMENT AND CONSERVATION,
GOVERNMENT OF NEWFOUNDLAND
AND LABRADOR

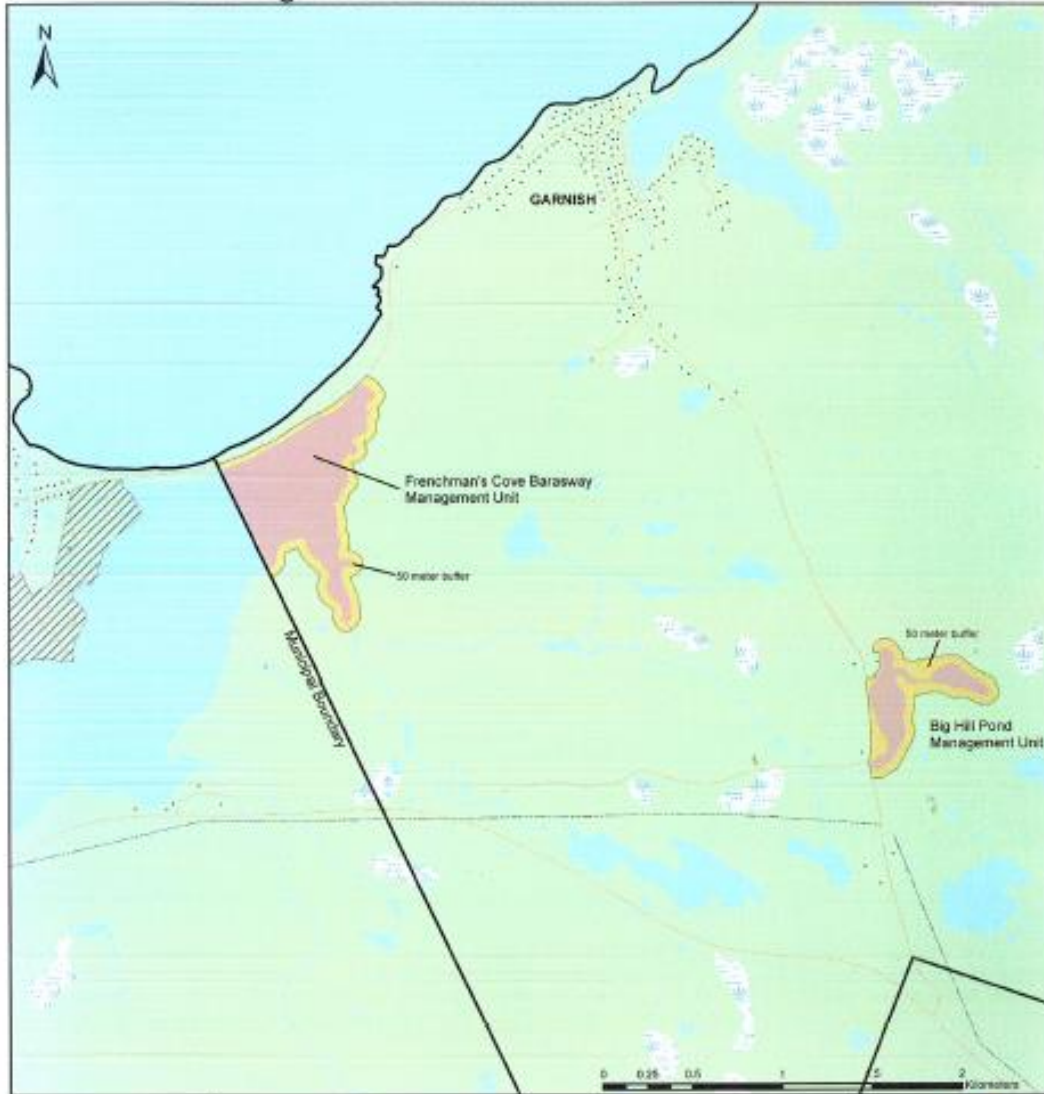
THE SEAL OF the Town Council of the Town of Garnish hereunto affixed in the presence of:


Witness


THE TOWN COUNCIL OF THE TOWN
OF GARNISH

SCHEDULE A

Management Units for the Town of Garnish



Legend

- Municipal Boundary
- Management Units
- Provincial Park
- Buildings
- Roads
- Powerline
- Rivers/Streams
- Wetlands
- Vegetation
- Waterbodies

Newfoundland
Labrador



Projection Information:
TM NAD 83 CNT
August 2013

Appendix 2: Birds in the Town of Garnish

The following 42 different species of birds have been reported from within the municipal boundary of the Town of Garnish on **ebird.org**. Many other birds have been reported in hotspots in the Town of Frenchman's Cove near the provincial park as well, so the number of birds who use habitat within the Town of Garnish is likely much higher.

Standard English name	Latin (scientific) name	Local name	Conservation status
American Black Duck	<i>Anas rubripes</i>		IUCN: Least Concern decreasing
American Crow	<i>Corvus brachyrhynchos</i>		IUCN: Least Concern increasing
American Golden-Plover	<i>Pluvialis dominica</i>	Ground plover, marsh plover	IUCN: Least Concern decreasing
American Goldfinch	<i>Carduelis tristis</i>		IUCN: Least Concern increasing
American Pipit	<i>Anthus rubescens</i>		IUCN: Least Concern decreasing
American Robin	<i>Turdus migratorius</i>		IUCN: Least Concern increasing
Black-bellied Plover	<i>Pluvialis squatarola</i>	Sand plover	IUCN: Least Concern decreasing
Blue Jay	<i>Cyanocitta cristata</i>		IUCN: Least Concern stable
Canada Goose	<i>Branta canadensis</i>		IUCN: Least Concern increasing
Caspian Tern	<i>Hydroprogne caspia</i>	Mackerel gull	IUCN: Least Concern increasing
Common Loon	<i>Gavia immer</i>	Loo', Wabble	IUCN: Least Concern stable
Common Raven	<i>Corvus corax</i>		IUCN: Least Concern increasing
Common Tern	<i>Sterna hirundo</i>	Stearin, paytrick	IUCN: Least Concern unknown
Dark-eyed Junco	<i>Junco hyemalis</i>		IUCN: Least Concern stable
Double-crested Cormorant	<i>Phalacrocorax auritus</i>	Shag, toggle	IUCN: Least Concern increasing
Dovekie (Little Auk)	<i>Alle alle</i>	Bull Bird, Ice Bird, Nunchies	IUCN: Least Concern decreasing
Dunlin	<i>Calidris alpina</i>		IUCN: Least Concern decreasing
European Starling	<i>Sturnus vulgaris</i>		Introduced from Europe. IUCN: Least Concern decreasing
Fox Sparrow	<i>Passerella iliaca</i>	Tom fox, foxy tom, foxy rooter	IUCN: Least Concern stable
Great Black-backed Gull	<i>Larus marinus</i>	Saddleback, saddler	IUCN: Least Concern unknown

Greater Yellowlegs	<i>Tringa melanoleuca</i>	Twillick, Aunt Sary, Nansary	IUCN: Least Concern stable
Herring Gull	<i>Larus argentatus</i>	Bluey, blue gull, glue gull	IUCN: Least Concern decreasing
House Sparrow	<i>Passer domesticus</i>		Introduced from Europe. IUCN: Least Concern decreasing
Mallard	<i>Anas platyrhynchos</i>		IUCN: Least Concern increasing
Merlin	<i>Falco columbarius</i>	Pigeon Hawk	IUCN: Least Concern stable
Northern Gannet	<i>Morus bassanus</i>	Gaunt	IUCN: Least Concern increasing
Northern Harrier	<i>Circus cyaneus</i>	Marsh Hawk	IUCN: Least Concern decreasing
Pine Warbler	<i>Setophaga pinus</i>		IUCN: Least Concern increasing
Red-breasted Merganser	<i>Mergus serrator</i>	Shellbird, shellduck	IUCN: Least Concern stable
Ring-billed Gull	<i>Larus delawarensis</i>	Pond gull	IUCN: Least Concern increasing
Ruddy Turnstone	<i>Arenaria interpres</i>	Red legs, fat oxen	IUCN: Least Concern decreasing
Sanderling	<i>Calidris alba</i>	White beachy bird	IUCN: Least Concern unknown
Savannah Sparrow	<i>Passerculus sandwichensis</i>	Grassbird (generic)	IUCN: Least Concern stable
Semipalmated Plover	<i>Charadrius semipalmatus</i>	Ring plover, little ringneck	IUCN: Least Concern stable
Semipalmated Sandpiper	<i>Calidris pusilla</i>	Oxeye	IUCN: Near Threatened
Short-billed Dowitcher	<i>Limnodromus griseus</i>		IUCN: Least Concern decreasing
Song sparrow	<i>Melospiza melodia</i>		IUCN: Least Concern stable
Spotted Sandpiper	<i>Actitis macularius</i>	Wagg ass, shag ass, beachy bird, peatwheat	IUCN: Least Concern decreasing
Swamp Sparrow	<i>Melospiza georgiana</i>		IUCN: Least Concern increasing
Whimbrel	<i>Numenius phaeopus</i>	Curlew, jack curlew	IUCN: Least Concern decreasing
White-rumped Sandpiper	<i>Calidris fuscicollis</i>	Beachy bird	IUCN: Least Concern decreasing
Yellow Warbler	<i>Setophaga petechia</i>	Yellow hammer	IUCN: Least Concern stable
Yellow-rumped Warbler	<i>Dendroica coronata</i>		IUCN: Least Concern unknown

Appendix 3: Conservation enforcement form

Complaint / information related to conservation, hunting, or wildlife enforcement issues

You can also report any issues online 24/7 by calling 1.877.820.0999 or at stoppoaching.ca

You can stay anonymous, whether it's by phone, online, or on this form

Please fill in as much of the following information as you can. Even partial info can be helpful

Date When did it happen? Or is it an ongoing issue?	
Time Is there a specific time of day when it happens?	
Suspects Do you have an idea of who it might be?	
Location Where is it happening? Being as specific as possible will help	
Vehicles Description of vehicles (ATVs, cars, trucks, boats, etc) being used and/or licence plates	

Please fill in any other details you have regarding the complaint/information

Do you wish to remain anonymous (Circle one)

Yes No

If you choose to provide your name or number, you may be contacted for follow up. If you provide this info it will be kept confidential by enforcement, or you may remain completely anonymous by leaving both these spaces blank. Thank you – you've played an important role in protecting your natural resources.

**Name
(optional)**

**Phone
(optional)**

Appendix 4: Bird & Bat Houses

(from Ohio Division of Wildlife – Wildlife Diversity and Endangered Species Program – not all species listed below will be found in your area)

Species	Specifications					
	Inches				Feet Above Ground	Preferred Habitat
	Entrance		Floor Dimensions	House Depth		
	Diameter	Above Floor				
Bluebird	1 ½	6-7	5 x 5	8-9	5-10	Open field with perches
Chickadee, black capped	1 ½	6-8	4 x 4	8-10	5-15	Woodland with perches
" Carolina	1 ½	6-8	4 x 4	8-10	6-15	Woodland
Flicker	2 ½	14-16	7 x 7	16-18	6-20	Woodland
Fly catcher, great crested	2	6-8	6 x 6	8-10	8-20	Woodland
Kestrel	3	9-12	8 x 8	12-15	10-30	Open field
Martin, purple	2 ½*	18	6 X 6*	6*	15-20	Open fields AWAY from trees & near water
Nuthatch, white-breasted	1 ¼	6-8	4 x 4	8-10	12-20	Woodland
Owl, barred	7 x 7 arch	12	12 x 12	23	20-23	Woodland
" screech-	3	9-12	8 x 8	12-15	10-30	
" barn	6 x 6	6	12 x 36	15-18	20-25	
Phoebe	Open front & sides		7 x 7	8	8-12	Backyard
Robin	Open front & sides		7 x 7	8	8-12	Backyard
Swallow, tree	1 ½	1-5	5 x 5	6	6-10	Open field near water
Titmouse, tufted	1 ¼	6-8	4 x 4	8-10	6-15	Woodland edge & interior
Warbler, prothonotary	1 ½	6	5 x 5	8	5-10	Over and near water
Woodpecker, downy	1 ¼	6-8	4 x 4	8-10	6-20	Woodland interior
" hairy	1 ½	9-12	6 x 6	12-15	12-20	
" red-bellied	2 ½	10-12	6 x 6	12-14	12-20	
" red-headed	2	9-12	6 x 6	12-15	12-20	
Wren, Carolina	1 ½	4-6	4 x 4	6-8	5-10	Near brushy areas & backyards
" house	1 ¼	4-6	4 x 4	6-8	5-10	

*These are the dimensions for one compartment. Martins nest in colonies; therefore, martin houses should have a minimum of six self-contained apartments.

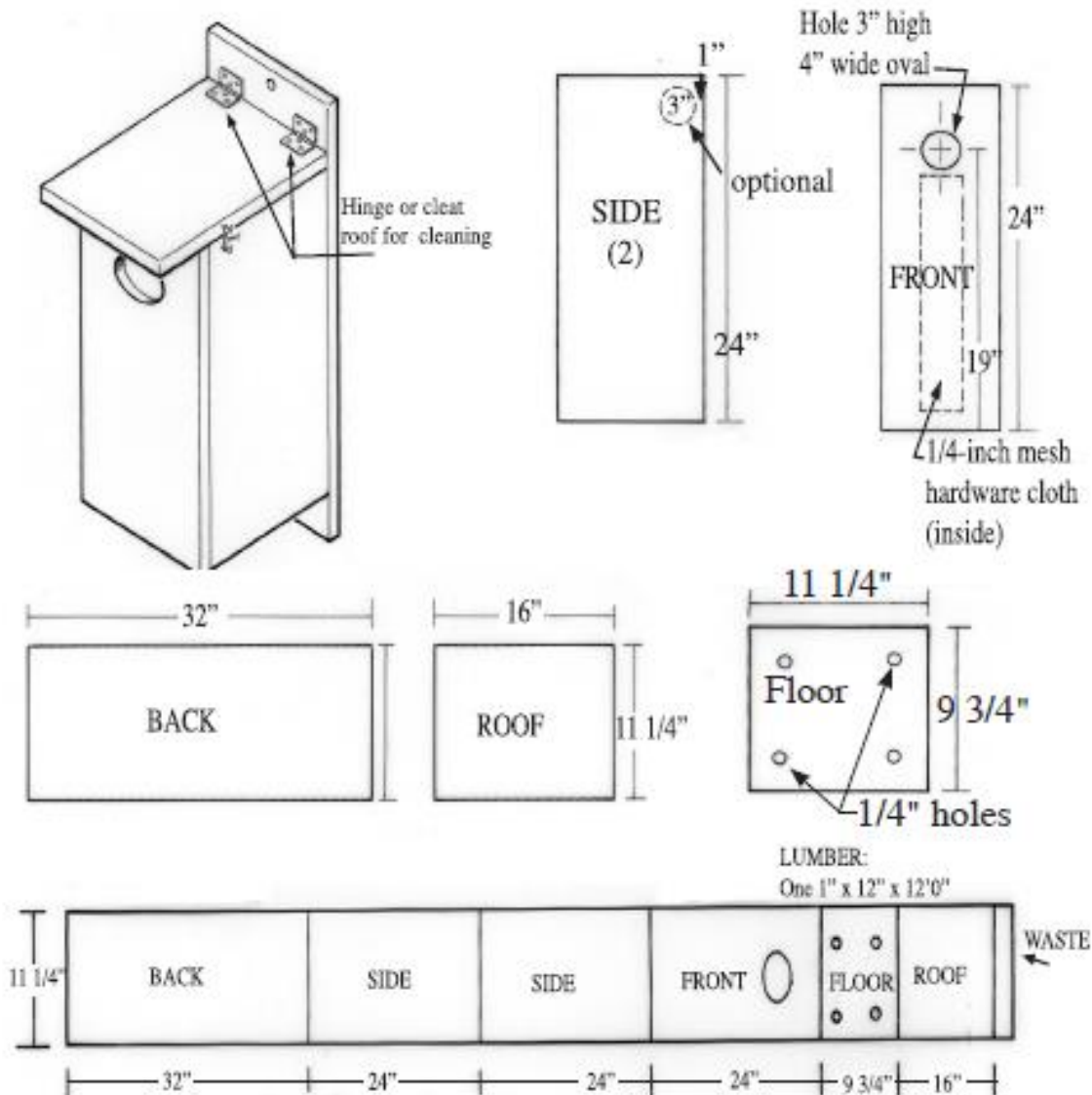
Removing unwanted species such as starlings and house sparrows will increase your chances for nesting success.

WOOD DUCK NEST BOX

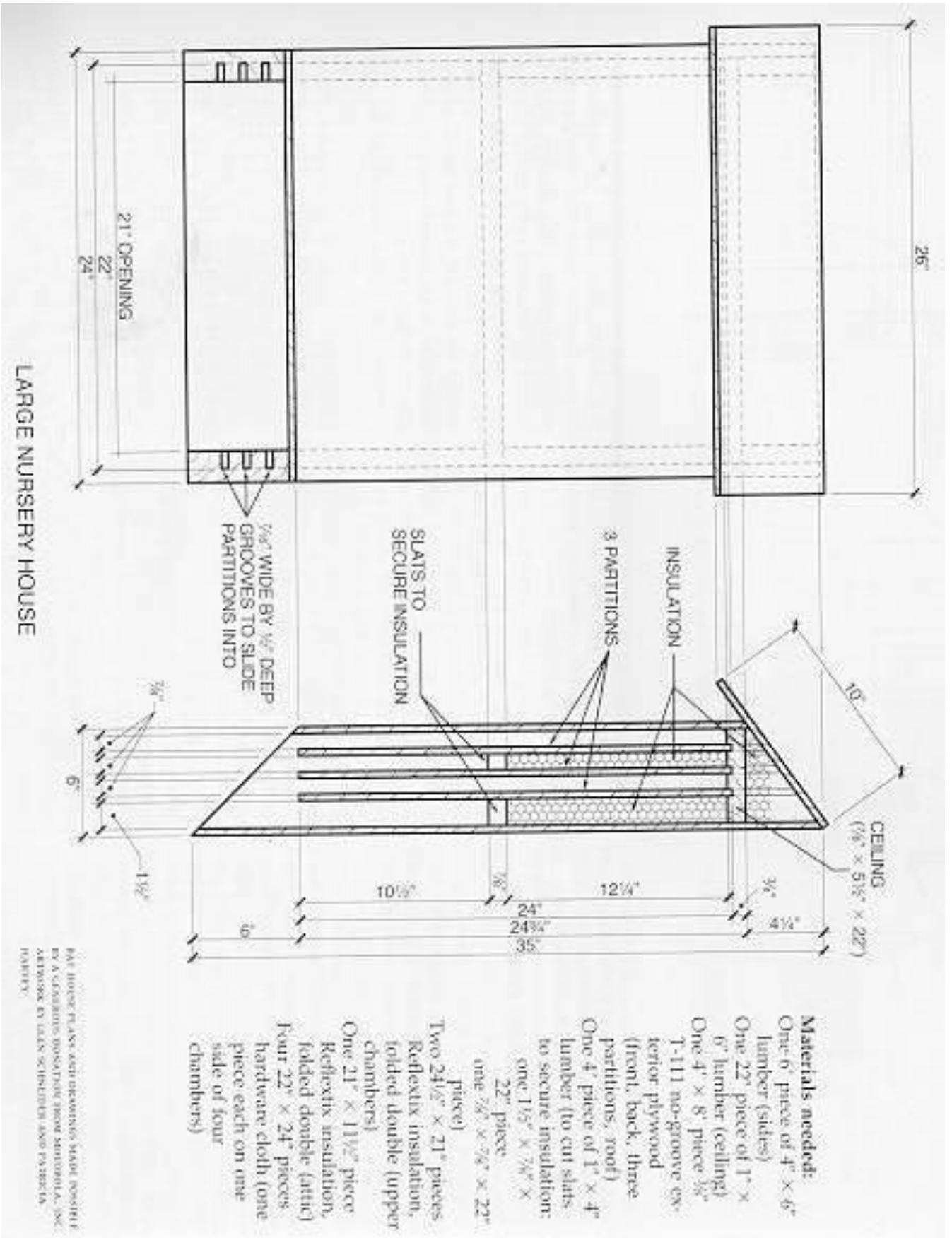


Boxes placed on posts in water should be six to eight feet above the water. Wood duck boxes can also be placed in woodland habitat up to a half mile from lakes, ponds, marshes, and rivers. Since the hen must lead her ducklings to water after they hatch, the habitat between the house location and the water's edge should be free of major obstacles, such as fences, highways, mesh wire, or curbing.

Cavity nesting ducks do not carry nesting materials. It is important to help them out by placing 2-4 inches of wood shavings (not sawdust) in the bottom of the box. Also, some type of predator guard should be used.



Bat Roosting Boxes



Appendix 5: Plants for ecological restoration

This guide to grasses, herbaceous plants, shrubs, and trees for ecological restoration projects in and around wetlands has been compiled by SAM (Stewardship Association of Municipalities, samnl.org) for Newfoundland and Labrador. Species recommended by Todd Boland, MUN Botanical Garden, or Tim Murray and Lorna Hogan, Murray's Gardens and Landscape Services, are **bolded** and listed first in their category. Other information in this guide is adapted from Canadian Wildlife Federation's Restore a Ribbon of Life (cwf-fcf.org/en/resources/for-educators/lesson-plans/archive/habitat-projects/members/ribbon-of-life.html), missouribotanicalgarden.org, illinoiswildflowers.info, and plants.usda.gov.

Herbaceous Plants

English name	Latin name	Range	Site Requirements	Conservation Value
Joe-pye weed	<i>Eutrochium maculatum</i>	Coast to coast	Wetlands, meadows, marshes, fens; less tolerant of disturbance	Highly attractive to butterflies, honeybees, bumblebees
Tall Meadowrue	<i>Thalictrum pubescens</i>	ON, QC, NB, PEI, NS, NL	Lower, wetter sites	Food source for pollinators and other invertebrates
Blue flag iris	<i>Iris versicolor</i>	MB, ON, QC, NB, PEI, NS, NL	Wet sites, shallow water	Attractive to pollinators such as bees, butterflies, and moths, as well as to other insects; provides cover
Purple-stem (swamp) aster	<i>Symphotrichum puniceum</i>	Coast to coast	Swamps, open wet areas with sun	Attractive to a wide variety of pollinators and insects
Turtlehead	<i>Chelone glabra</i>	MB, ON, QC, NB, PEI, NS, NL	Moist to wet soils; full to partial sun	Attractive to pollinators such as bumblebees, butterflies, and other insects; erosion control
Rough-stemmed	<i>Solidago rugosa</i>	ON, QC, NB, PEI, NS, NL	Low woods, barrens, bogs, old fields	Attractive to a wide variety of pollinators and insects; food

goldenrod				source for passerine birds and grouse
Lance-leaved goldenrod	<i>Euthamia graminifolia</i>	Coast to coast	Moist soil, wetland edges, ditches	Food source for goldfinch, sparrows, and some mammals; attractive to pollinators
Fireweed	<i>Chamerion angustifolium</i>	Coast to coast	Full or partial sun; moist soil	Attractive to pollinators; food source for insects and some mammals
White-topped aster	<i>Doellingera umbellata</i>	ON, QC, NB, PEI, NS, NL	Full or partial sun; slightly wet to moist soil	Food source for songbirds and grouse; attractive to pollinators including bees and butterflies
New York aster	<i>Symphotrichum novi-belgii</i>	QC, NB, PEI, NS, NL	Brackish or salt marshes; riparian areas	Late season food source for songbirds; attractive to pollinators including bees and butterflies

Shrubs & small trees

English name	Latin name	Range	Site Requirements	Conservation Value
Balsam-poplar	<i>Populus balsamifera</i>	Coast to coast	Full sun to partial shade; prefers most soils on shorelines	Erosion control; vegetation buffer; wildlife food, cover, and nesting sites
Bebb's or Beaked Willow	<i>Salix bebbiana</i>	Coast to coast	Tolerant to a range of wet soils; full sun to partial shade	Erosion control, bank stabilization, excess nutrient uptake, food source
Broad leaved Meadowsweet	<i>Spiraea latifolia</i>	MB, ON, QC, NB, NS, PEI, NL	Moist clay, sand, or loam soils with sun or partial shade	Food for birds, butterflies, and bees; host plant for Spring Azure butterfly
Green alder	<i>Alnus crispa</i>	Coast to coast	Nutrient-poor sites with normal or moist soil; sun or partial shade	Erosion control and bank stabilization, excess nutrient uptake, food source; fixes nitrogen
Grey/ speckled alder	<i>Alnus incana</i>	Coast to coast	Riparian areas; wide range of soil types and moisture levels	Erosion control and bank stabilization, excess nutrient uptake, food source; fixes nitrogen
Highbush cranberry	<i>Viburnum trilobum</i>	AB, SK, MB, ON, QC, NB, NS, PEI, NL	Stream banks and lake shores; wide range of soils; shade tolerant	Erosion control; vegetation buffer; fence row; food for birds and mammals
Purple chokeberry	<i>Aronia floribunda</i>	ON, QC, NB, NS, PEI, NL	Wet soils; wetland edges	Fruits are a good food source for birds
Pussy-willow	<i>Salix discolor</i>	Coast to coast	Full sun; deep, rich shoreline soils; moist to wet conditions	Vegetation buffer; fence row; nectar source for pollinators; food source
Red-osier dogwood	<i>Cornus sericea</i> /	Coast to coast	Full sun to partial shade in moist to	Vegetation buffer; fence row; food, cover, and nesting sites for birds

	<i>Cornus stolonifera</i>		wet soils; stream banks; lake shores; wetlands	and mammals
Shining Rose	<i>Rosa nitida</i>	ON, QC, NB, NS, PEI, NL	Bogs and wet soils	Food source for songbirds and grouse; attractive to pollinators such as bumblebees and other bees
Sweet gale, bog myrtle	<i>Myrica gale</i>	Coast to coast	Bogs, intertidal areas	Fixes nitrogen; food source for a variety of insects, including butterflies
Winterberry	<i>Ilex verticillata</i>	ON, QC, NB, NS, PEI, NL	Partial sun, wet to moist conditions	Important winter food source for songbirds, other small birds, and mammals;
American mountain ash	<i>Populus balsamifera</i>	Coast to coast	Full sun; wide range of soils	Vegetation buffer; wildlife food, cover, and nesting sites
Blackberry	<i>Rubus</i> sp.	Coast to coast	Moist, well-drained soils	Vegetation buffer; fence row; food and cover for birds and mammals; butterfly nectar source
Elderberry	<i>Sambucus</i>	Coast to coast	Full sun to full shade; rich, moist soils	Food and cover for shoreline birds and mammals; butterfly nectar source
Raspberry	<i>Rubus</i> sp.	YT, NWT, BC, ON, QC, NB, NS, PEI, NL	Wide range of soils; shade tolerant; flood tolerant; stream banks and lake shores	Erosion control; vegetation buffer; fence row; food and shelter for birds and mammals
Wild black currant	<i>Ribes americanum</i>	YT, NWT, AB, SK, MB, ON, QC, NB, NS, PEI, NL	Wide range of soils; moist to wet shorelines	Erosion control; vegetation buffer; fence row; wildlife food and cover; butterfly nectar source

Other shrubs which may also be useful for restoration projects, although not in very wet sites:

Bearberry / kinnikinnick: *Arctostaphylos uva-ursi*

Mountain holly / false holly / catberry: *Ilex (Nemopanthus) mucronata*

Canadian / Shadblow serviceberry: *Amelanchier canadensis*

Chokecherry / bird cherry: *Prunus virginia*

Squashberry / Mooseberry / Pembina / Cranberry: *Viburnum edule*

Northern Wild Raisin / Witherod viburnum: *Viburnum cassinoides*

Trees

English name	Latin name	Range	Site Requirements	Conservation Value
Black Spruce	<i>Picea mariana</i>	Coast to coast	Wet sites alongside lakes, streams, and wetlands	Vegetation buffer; wildlife food, cover, and nesting sites
Paper birch	<i>Betula papyrifera</i>	Coast to coast	Full sun to partial shade; wide range of moist soils	Erosion control; vegetation buffer; wildlife food and cover
Red maple	<i>Acer rubrum</i>	MB, ON, QC, NB, NS, PEI, NL	Wide range of shoreline soils; flood tolerant	Erosion control; vegetation buffer; wildlife food and cover
Shining Willow	<i>Salix lucida</i>	SK, MB, ON, QC, NB, PEI, NS, NL	Moist to wet conditions	Erosion control; vegetation buffer; wildlife cover; food source
Balsam-fir	<i>Abies balsamea</i>	YT, AB, SK, MB, ON, QC, NB, NS, PEI, NL	Wide range of moist, rich soils; drought resistant	Vegetation buffer; wildlife food, shelter, and nesting sites
Tamarack or Larch ("juniper" in NL)	<i>Larix laricina</i>	YT, NWT, ON, QC, NB, NS, PEI, NL	Alongside stream banks and lake shores; wet sites alongside wetlands	Vegetation buffer; food and cover for shoreline birds and mammals
Trembling	<i>Populus</i>	MB, ON, QC, NB,	Full sun to partial	Erosion control; vegetation buffer;

aspen	<i>tremuloides</i>	NS, PEI, NL	shade; wide range of shoreline soils	food and cover for shoreline birds and mammals
White pine	<i>Pinus strobus</i>	YT, NWT, BC, AB, SK, MB, ON, QC, NB, NS, PEI, NL	Wide range of soils; dry sites alongside wetlands	Food and cover for shoreline birds and mammals
Yellow birch	<i>Betula alleghaniensis</i>	ON, QC, NB, NS, PEI, NL	Full sun to partial shade; moist shoreline soils	Erosion control; vegetation buffer; wildlife food and cover

Terrestrial & Aquatic Grasses

English name	Latin name	Range	Site Requirements	Conservation Value
Blue-joint Grass	<i>Calamagrostis canadensis</i>	Coast to coast	Various types of forest, taiga, and tundra including wet areas	Food for waterfowl and other animals; bank, shoreline, and soil stabilization
Clovers	<i>Trifolium</i> sp.	Coast to coast	Wet soils bordering on streams, lakes, and wetlands; full sun	Food and cover for upland birds and mammals; nectar source for pollinating insects
Dune Grass (American beachgrass)	<i>Ammophila breviligulata</i>	Eastern Canada	Shifting sand dunes, high winds, unstabilized sands with regular sand burial	Bank and shoreline stabilization; tall stands can provide shade and cover for waterfowl
Eelgrass	<i>Zostera marina</i>	Coasts	Calm waters in the sublittoral zone	Filters polluted runoff, absorbs excess nutrients; protects shorelines from erosion; habitat, protection, nursery, and food source for aquatic animals

Fescue	<i>Festuca</i> sp.	YT, NWT, BC, AB, SK, MB, ON, QC, NL	Dry to moist soils bordering on streams, lakes, and wetlands; full sun	Erosion control; vegetation buffer; food and cover for upland birds, mammals, and insects
Salt Water or Smooth Cord Grass	<i>Spartina alterniflora</i>	QC, NB, PEI, NS, NL	Shorelines with 2-45 cm water depths, mid-point between high and low tide elevation	Erosion control, soil stabilizer, food for waterfowl and other animals; tall stands provide shade and cover for waterfowl and may help prevent algal blooms
Three-Square Bulrush	<i>Scirpus americanus</i> / <i>Schoenoplectus americanus</i>	Coast to coast	Brackish areas with 0-10cm water depths	Good for saltmarsh revegetation; food for waterfowl and other animals
Wild Rye	<i>Elymus virginicus</i>	Coast to coast	Moist, well-drained soils with full sun to partial shade	Erosion control, food for waterfowl and other animals; tall stands can provide shade and cover for waterfowl and may help prevent algal blooms